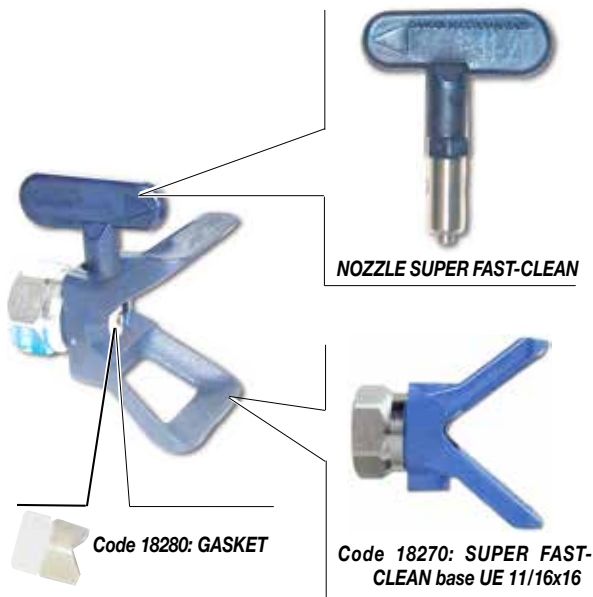


SUPER FAST-CLEAN



PISTON GUNSTOCK FILTERS
Code 11039: Green (30M)
Code 11038: White (60M)
Code 11037: Yellow (100M)
Code 11019: Red (200M)



- Compatible with all Airless guns
- Rapid replacement of working nozzle
- Rapid safe cleaning
- Maximum working pressure 350 bar (5075 psi)
- Long lasting carbon-tungsten insert
- Excellent finish

*Code-nozzle/angle	Ø inch	Ø mm	Product type	Filter recom.
SFC07-20	0,007"	0,18	Transp. and pigmented paints, thin enamels	Red 200 M
SFC07-40				
SFC09-40	0,009"	0,23		
SFC11-20	0,011"	0,28	Nitro, synthetic and polyurethane paints	Yellow 100 M
SFC11-40				
SFC13-20	0,013"	0,33		
SFC13-60				
SFC15-20	0,015"	0,38	Antitrust	
SFC15-60				
SFC17-20	0,017"	0,43		
SFC17-60			Primers, zinc inorganic, water paints	
SFC19-20	0,019"	0,48		
SFC19-40				
SFC19-60				
SFC21-20	0,021"	0,53		
SFC21-40				
SFC21-60			Thixotropic, stucco spray, high solid, paints with glue, fillers	White 60 M
SFC23-20	0,023"	0,58		
SFC23-60				
SFC25-20	0,025"	0,63		
SFC25-40				
SFC25-60				
SFC27-20	0,027"	0,68		
SFC27-60				
SFC27-80				
SFC29-20	0,029"	0,74		
SFC29-40				
SFC29-60				
SFC29-80			wwGreen 30 M	
SFC31-40	0,031"	0,79		
SFC31-60				
SFC31-80				
SFC33-40	0,033"	0,83		
SFC33-60				
SFC33-80				
SFC35-40	0,035"	0,89		
SFC37-40	0,037"	0,94		
SFC39-40	0,039"	1,00		
SFC39-60				
SFC39-80				
SFC41-40	0,041"	1,05		
SFC43-40	0,043"	1,10		
SFC43-60	0,045"	0,15		
SFC43-80				
SFC45-60	0,047"	1,20		
SFC47-60				
SFC51-60	0,051"	1,30		
SFC51-80				

©Copyright, SAMOA INDUSTRIAL, S.A.

SAMOA Industrial, S.A. is an ISO 9001, ISO 14001 and ISO 45001 certified company.



Contact us today!

Visit www.samoaindustrial.com for more information.

ED. 13 - 01/2024

Cod. 150171

INSTRUCTION MANUAL



www.larius.com

AT300 AIRLESS GUN

Professional gun at high pressure
 With device-Clean Super Fast

M16x1,5 - Code 11000
 1/4" - Code 11090

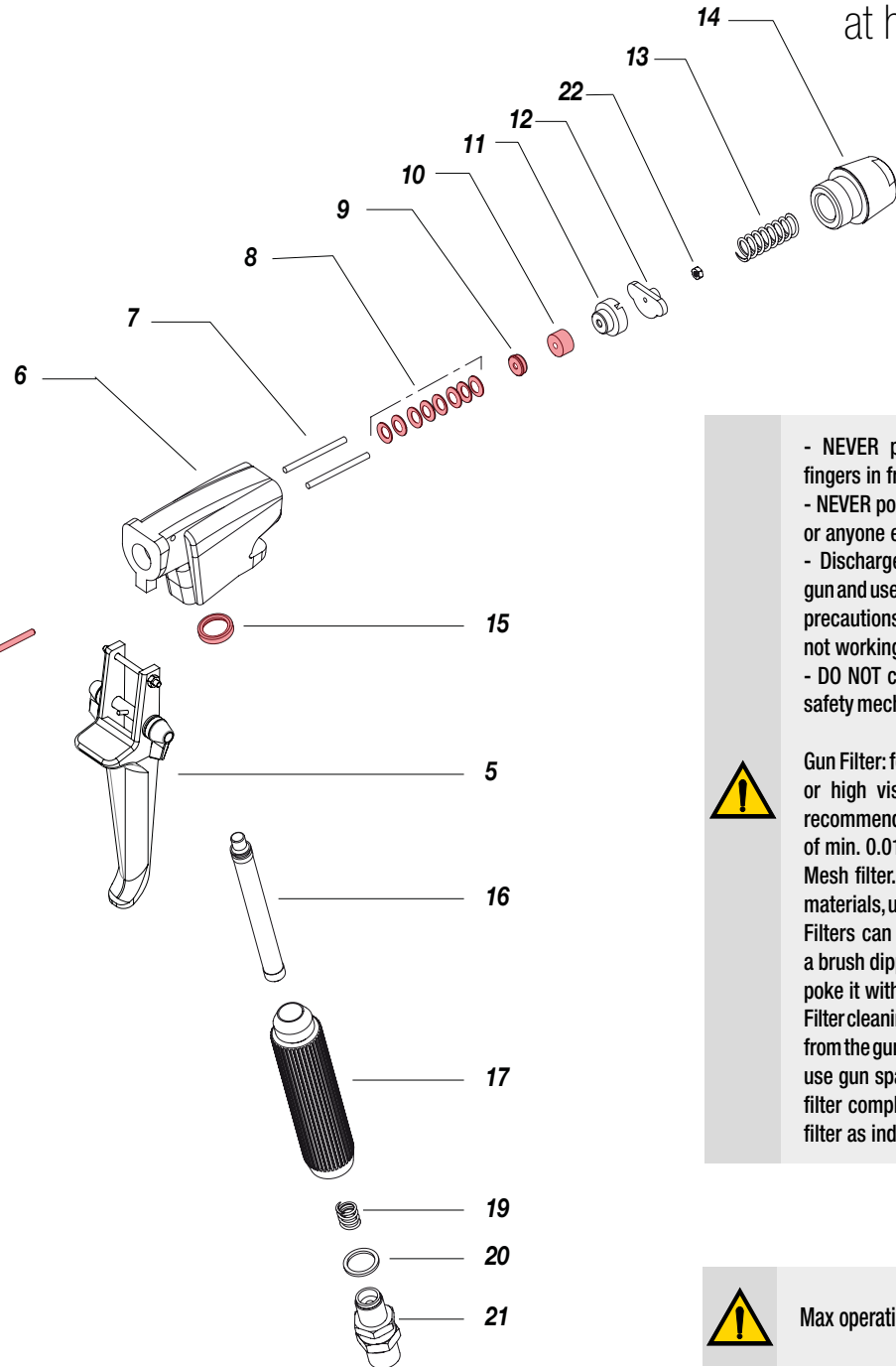
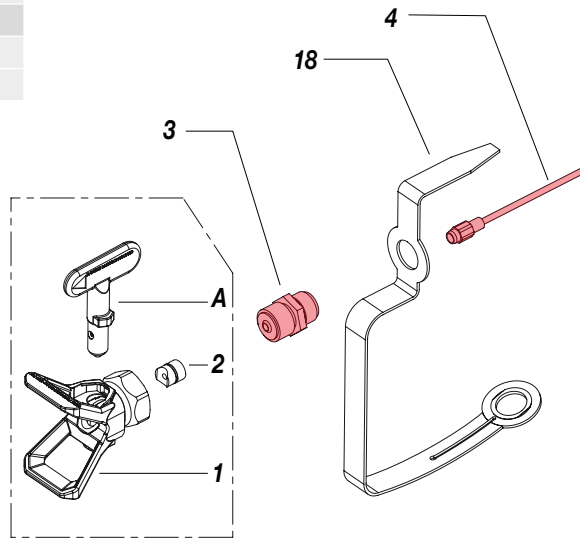


- IT https://www.larius.com/wp-content/uploads/PISTOLA-AT300_I.pdf
- EN https://www.larius.com/wp-content/uploads/PISTOLA-AT300_GB.pdf
- DE https://www.larius.com/wp-content/uploads/PISTOLA-AT300_D.pdf
- FR https://www.larius.com/wp-content/uploads/PISTOLA-AT300_F.pdf
- ES https://www.larius.com/wp-content/uploads/PISTOLA-AT300_E.pdf



Pos.	Code	Description
A	See table*	Nozzle Super Fast Clean
1	18270	Body Super Fast Clean
2	18280	Gasket Super Fast Clean
3	11004	Sleeve
4	11005	Prick punch complete
5	11008	Trigger gen
6	11007	Gun body
7	11021	Pins
8	11035	Spring Bauer kit includes n° 8 springs
9	11023	Wedge
10	11024	Sleeve sealing
11	11025	Screw press sleeve
12	11026	Plate
13	11028	Spring
14	11029	Adjustment knob
15	11020	Gasket

Pos.	Code	Description
16	-	Filter
17	11018	Handgrip
18	11006	Safety for hand
19	11017	Spring
20	32010	Copper washer
21	11015	Articulated joints M16x1,5
	10155	Articulated joints 1/4"
22	11027	Self-locking nut



AT300 AIRLESS GUN at high pressure

- NEVER place your hands or fingers in front of the nozzle
- NEVER point the gun at yourself or anyone else
- Discharge the pressure in the gun and use the appropriate safety precautions when the operator is not working
- DO NOT cut or tamper with the safety mechanisms on the device.



Gun Filter: for coarsely pigmented or high viscosity materials, we recommend the use of a nozzle of min. 0.018" diameter and a 50 Mesh filter. For fine, thin-flowing materials, use a filter of 200 Mesh. Filters can be best cleaned with a brush dipped in solvent. Never poke it with a sharp instrument. Filter cleaning: Unscrew the handle from the gun housing (if necessary, use gun spanner and pull out the filter completely). Insert the new filter as indicated in the drawing.

Kit code	Position	Description
40020	3,4	Kit AT 300

Kit code	Position	Description
40015	8, 9, 10, 2x(15)	Gaskets kit AT 300



Max operating pressure 400 bar