


SUPER FAST-CLEAN



- Compatible with all Airless guns
- Rapid replacement of working nozzle
- Rapid safe cleaning
- Maximum working pressure 350 bar (5075 psi)
- Long lasting carbon-tungsten insert
- Excellent finish



- NEVER place your hands or fingers in front of the nozzle
- NEVER point the gun at yourself or anyone else
- Discharge the pressure in the gun and use the appropriate safety precautions when the operator is not working
- DO NOT cut or tamper with the safety mechanisms on the device

*Code nozzle angle	Ø inch	Ø mm	Product type	Filter recom.
SFC07-20	0,007"	0,18	Clear and pigmented coats, thin enamels	Red 200 M
SFC07-40				
SFC09-40	0,009"	0,23		
SFC11-20	0,011"	0,28	Nitro, synthetic and polyurethane paints	Yellow 100 M
SFC11-40				
SFC13-20	0,013"	0,33		
SFC13-40			Antitrust	Yellow 100 M
SFC13-60				
SFC15-20	0,015"	0,38		
SFC15-40			Antitrust	Yellow 100 M
SFC15-60				
SFC17-20	0,017"	0,43		
SFC17-40			Antitrust	White 60 M
SFC17-60				
SFC19-20	0,019"	0,48		
SFC19-40			Antitrust	White 60 M
SFC19-60				
SFC21-20	0,021"	0,53		
SFC21-40			Thixotropic, stucco spray, high solids paints with glue, fillers	White 60 M
SFC21-60				
SFC23-20	0,023"	0,58		
SFC23-40			Thixotropic, stucco spray, high solids paints with glue, fillers	White 60 M
SFC23-60				
SFC25-20	0,025"	0,63		
SFC25-40			Thixotropic, stucco spray, high solids paints with glue, fillers	White 60 M
SFC25-60				
SFC27-20	0,027"	0,68		
SFC27-40			Thixotropic, stucco spray, high solids paints with glue, fillers	White 60 M
SFC27-60				
SFC27-80				
SFC29-20	0,029"	0,74	Thixotropic, stucco spray, high solids paints with glue, fillers	White 60 M
SFC29-40				
SFC29-60				
SFC29-80			Thixotropic, stucco spray, high solids paints with glue, fillers	White 60 M
SFC31-40	0,031"	0,79		
SFC31-60				
SFC31-80			Thixotropic, stucco spray, high solids paints with glue, fillers	White 60 M
SFC33-40	0,033"	0,83		
SFC33-60				
SFC33-80			Thixotropic, stucco spray, high solids paints with glue, fillers	White 60 M
SFC35-40	0,035"	0,89		
SFC37-40	0,037"	0,94		
SFC39-40			Thixotropic, stucco spray, high solids paints with glue, fillers	White 60 M
SFC39-60	0,039"	1,00		
SFC39-80				
SFC41-40	0,041"	1,05	Thixotropic, stucco spray, high solids paints with glue, fillers	White 60 M
SFC43-40	0,043"	1,10		
SFC43-60				
SFC43-80			Thixotropic, stucco spray, high solids paints with glue, fillers	White 60 M
SFC45-60	0,045"	0,15		
SFC47-60	0,047"	1,20		
SFC51-60	0,051"	1,30	Thixotropic, stucco spray, high solids paints with glue, fillers	Green 30 M
SFC51-80				

REV. 05 - 02/2024

Cod. 150090

INSTRUCTION MANUAL



LEADING THROUGH INNOVATION

EN



www.larius.com

LA96 AUTOMATIC GUN

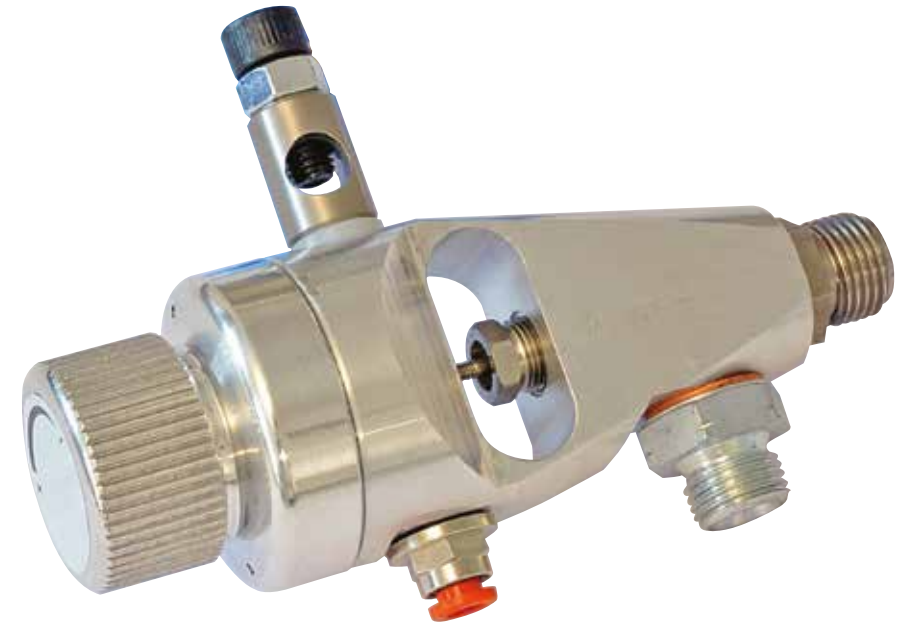
LA 96 (ALUMINUM) Code 11701

LA 96 STAINLESS STEEL STANDARD ENTRY Code 11731

LA 96 STAINLESS STEEL ENTRY GJ 1/4 Code 11731/1

LA 96 STAINLESS STEEL OUTLET 3/8" SV.Code 11760/1

LA 96 ALUMINIUM GJ 1/4 Code 11701/1



©Copyright, SAMOA INDUSTRIAL, S.A.

SAMOA Industrial, S.A. is an ISO 9001, ISO 14001 and ISO 45001 certified company.



Contact us today!

Visit www.samoaindustrial.com for more information.



IT https://www.larius.com/wp-content/uploads/PISTOLA-LA96_AUTOM_1.pdf

EN https://www.larius.com/wp-content/uploads/PISTOLA-LA96_AUTOM_UK.pdf

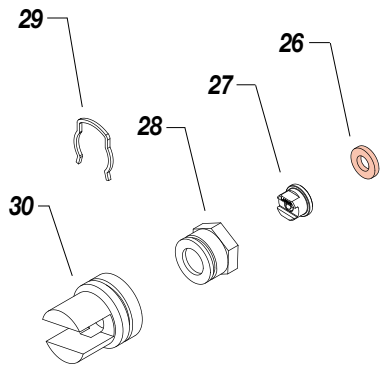
NOZZLE SUPER FAST CLEAN



COMPLETE GASKET
RIF. 18280

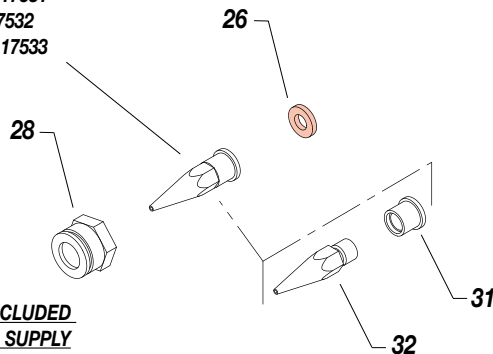
BODY SUPER FAST CLEAN
RIF. 18270

INCLUDED IN GUNS STANDARD SUPPLY
LA 96 RIF. 11701
AND LA 96 STAINLESS STEEL RIF. 11760



ASSEMBLED NOZZLE
Ø 1.5 mm RIF. 17531
Ø 1 mm RIF. 17532
Ø 2.5 mm RIF. 17533

NOZZLE FOR EXTRUDED CURBS



NOTE: NOT INCLUDED IN STANDARD SUPPLY

AUTOMATIC GUN

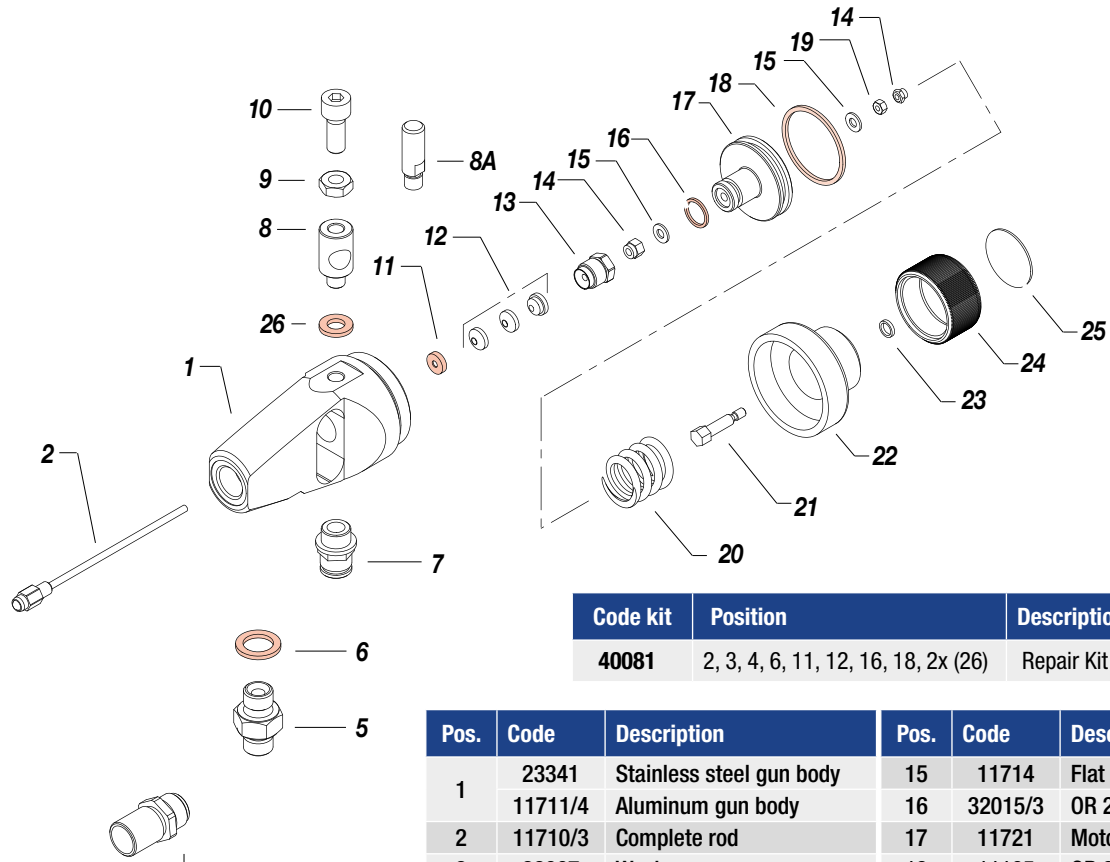
LA 96 (ALUMINUM) RIF. 11701

LA 96 STAINLESS STEEL STANDARD ENTRY RIF. 11731

LA 96 STAINLESS STEEL ENTRY GJ 1/4 RIF. 11731/1

LA 96 STAINLESS STEEL OUTLET 3/8" SV. RIF. 11760/1

LA 96 ALUMINIUM GJ 1/4 RIF. 11701/1



COMPLETE SLEEVE FOR VERSION LA 96 STAINLESS STEEL 2/8" REF. 23336

(DOES NOT FORESEE USE OF SUPER FAST CLEAN) AND OF COMPONENTS 26-27-28-29-30 (FIXED NOZZLE) AND NOZZLE FOR EXTRUDED CURBS

Code kit	Position	Description
40081	2, 3, 4, 6, 11, 12, 16, 18, 2x (26)	Repair Kit LA96 Automatic

Pos.	Code	Description	Pos.	Code	Description
1	23341	Stainless steel gun body	15	11714	Flat washer Ø 3
	11711/4	Aluminum gun body	16	32015/3	OR 2043
2	11710/3	Complete rod	17	11721	Motor piston
3	33007	Washer	18	11105	OR 3031
4	11004	Complete coupling	19	90025	Nut M3
	3103	Nipplo Gj1/4-Gj1/4 Inox	20	11108	Spring
	98383	Nipplo Gj1/4-M16x1.5 Inox	21	11715	Adjustment screw
	3199	Nipplo Gj1/4-M16x1.5	22	11716	Gun cap
	3289	Nipplo Gj1/4-Gj1/4	23	33013/7	OR 2021
6	33012	Washer	24	11717	Adjustment ring nut
7	8063	Revolving elbow quick coupling 1/4" Ø 8mm	25	12588	Label
8	11720	Male coupling	26	11003	Seal
8A	11718	Female coupling	27	vedi tab.	Nozzle
9	52017	Nut M8	28	11033	Ring nut
10	34008	Screw M8x20	29	11030	Locking spring
11	11712/2	Gaskets stuffing ring	30	11031	Finger guard
12	11785	Gasket pack	31	15002	Nozzle holder bushing
13	23335/1	Packing gland screw		15001	Nozzle ext. Ø 1.5
14	11027	Self-blocking nut M3		15016	Nozzle ext. Ø 2
				15017	Nozzle ext. Ø 2.5